
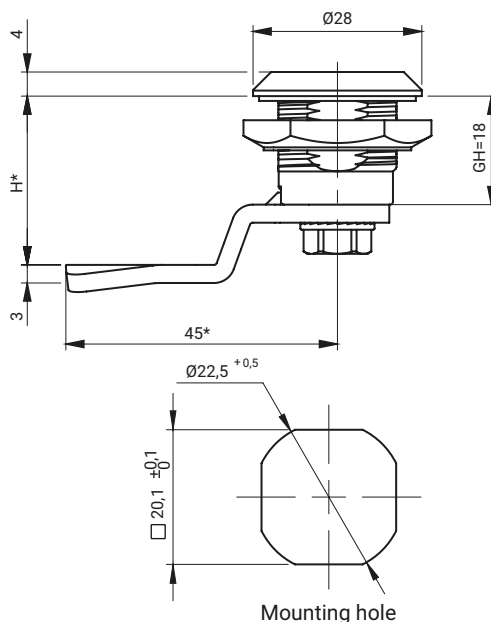


IP65

IP66**



EN 45545-2
for stainless steel version



FINISHING TYPE OF THE INSERT AND THE BODY [C]

| ZAMAK 5 | | | | | | | Polyamide | | Stainless steel | |
|---------|--------|------------|----------|----------|---------|------------|-----------|----------|-----------------|-----|
| Chrome | Nickel | Galvanized | RAL 9005 | RAL 7035 | KTL**** | No coating | RAL 9005 | RAL 7035 | 304 | 316 |
| 01 | 02 | 03 | 04 | 05 | 06 | 00 | 07 | 08 | 9.1 | 9.2 |

THE TYPE OF THE NUT [N]

| | ZAMAK 5 | Polyamide | Steel | Stainless steel | |
|-----------------------|---------|-----------|-------|-----------------|-----|
| | | | | 304 | 316 |
| Nut without grounding | 11 | 12 | 13 | 14 | 15 |
| Nut with grounding | 21 | - | 23 | 24 | 25 |

| TYPE OF THE MATERIAL OF THE INSERT | INSERTS [X] | | | | | | | | | | | | |
|------------------------------------|-------------|---|---|---|---|---|---|---|---|-----|-----|-----|-----|
| | | | | | | | | | | | | | |
| ZAMAK 5 | ● | ● | ● | ● | ● | ● | ● | ● | ● | | | | |
| Polyamide | ● | ● | - | ● | ● | ● | - | - | - | *** | *** | *** | *** |
| Stainless steel | 304 | ● | ● | ● | ● | ● | - | - | ● | | | | |
| | 316 | ● | ● | ● | ● | ● | - | - | ● | | | | |

- * Possibility to order in another dimension
- ** Lock for special request.
- *** Precise description of inserts M1, M2, M3, check pg. 2A-10
- **** applies only to the body

How to order:

M22-3 — C.N — X.C — H.G — IP65

Type of lock

Type of body

Type of insert

Type of cam

IP65/IP66** class

where C,N, G stand for:
 C - type of the material and finishing of the surface
 N - type of nut
 H.G - the cam unbending dimension

Notice:
 The lock is fitted with cams from the group: 12, 14, 17, 17A, 18, 32, 34, JK1-16018, JK2-16018, J-6000.03, J-6000.04, JK-1610.01, JZ-002 (pg. 1C-10 to 1C-23)