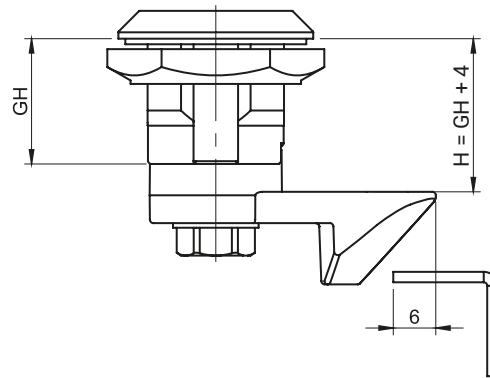


LH



Lock with cam on left version

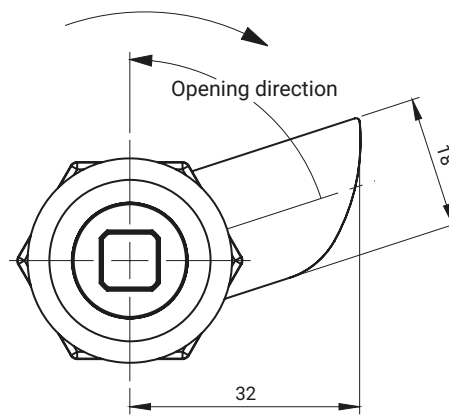


RH

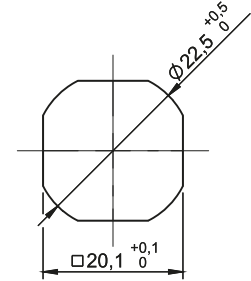


Locks with cam on right version




Automatic return of the lock to the closed position



Lock in the left version, the right version is a mirror reflection



Cut out

CATALOGUE NUMBER		VERSION	MATERIAL						
JZ-3522L		Left	ZAMAK 5						
JZ-3522P		Right							
COMPATIBLE LOCKS M22			INSERTS [X]	FINISHING TYPE OF THE INSERT AND THE BODY [C]					
TYPE OF LOCK	GH	MATERIAL		Chrome	Nickel	RAL9005	RAL7035		
M22-3	18	ZAMAK 5				01	02	04	05
M22-30	30		KW8	D5	T9				
M22-60	60								
THE TYPE OF THE NUT [N]									
		ZAMAK 5	Steel						
	Nut without grounding	11	13						
	Nut with grounding		23						

How to order:

- Type of lock [C]
- Body type / finish [C]
- Nut type [N]
- Type of insert [X]
- Pin finish [C]
- Cam catalogue number

