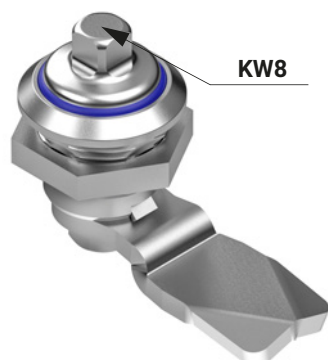
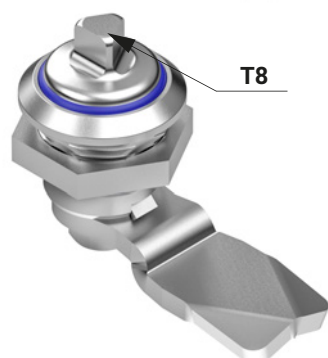


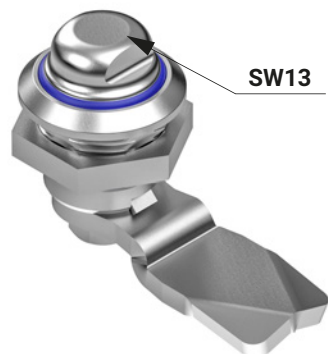
Lock M22IP



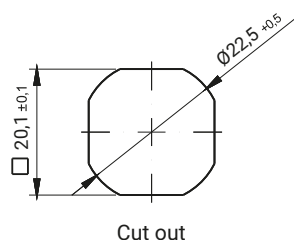
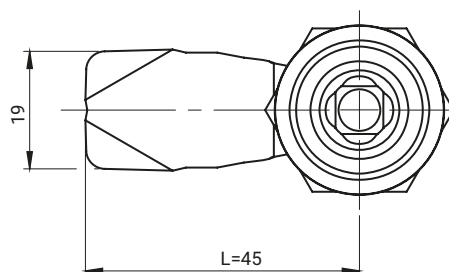
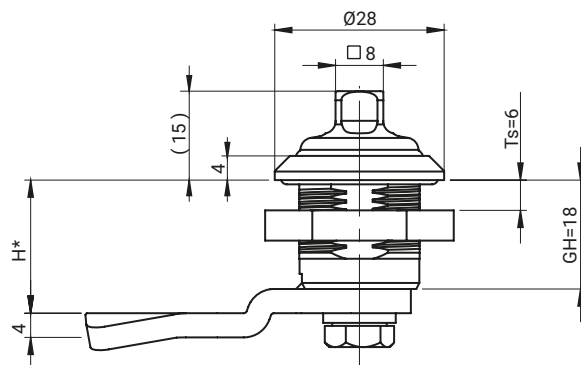
KW8



T8



SW13



The lock have a the IP69K protection

The seals are in accordance with FDA and have allowing from to come into contact with the food product

* standard material stainless steel 304, possible to order stainless steel 316

The key for pin SW13 should be ordered from page 2A-132

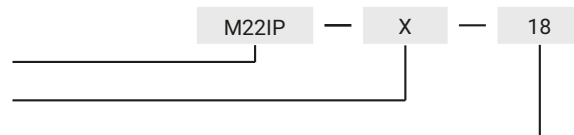
TYPE OF LOCK	COMPONENTS	MATERIAL	INSERT [X]		
M22IP	Housing, insert	Stainless steel			
	Cam	Stainless steel	KW8	T8	SW13

How to order:

Type of lock

Type of insert

Height cam H



The lock is fitted with cams from the group: 14, 17A, 34, JK1-16018SN, JK2-16018SN, J-6000.03SN, J-6000.04SN, JK-1610.01 (pg. 1C-10 to 1C-21)

* possibility to make in another dimension