

Swinghandle

RS430, RS430/U, RS530, RS530/U

Info

1B | Swinghandles

2 | Locks | Latches

3 | Hinges

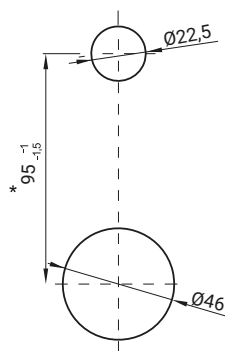
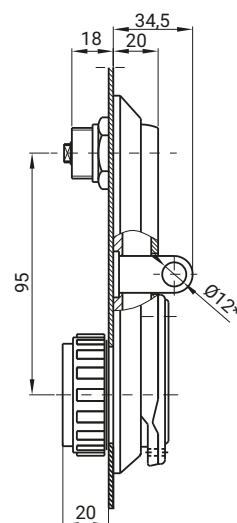
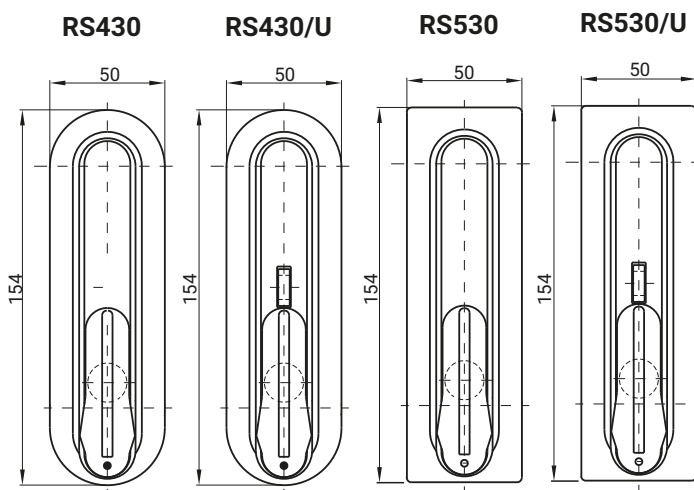
4 | Screw clamps

5 | Accessories

6 | Gasketing profiles

7 | Custom products

Index



Mounting hole

TYPE OF LOCK	COMPONENTS	MATERIAL						
RS430, RS430/U RS530, RS530/U	Housing, handle	Poliamide						
	Padlock ring	ZAMAK 5						
INSERTS		FINISH [C]						
		RAL 9005						
D3	D5	T9	T10	KW8	S	N	07	RAL 7035
							08	

How to order:

Type of lock
Type of insert
Finish

RS430/U — T9 — C

TYPE OF LOCK	COMPONENTS	MATERIAL		
RS430, RS430/U RS530, RS530/U	Housing, handle	Poliamid		
	Padlock ring	ZAMAK 5		
KEY CODE		FINISH [C]		
1333	455E	2432E	RAL 9005	RAL 7035
405E	1242E	Different code	07	08

How to order:

Type of lock
Key code
Finish

RS430/U 1333 C

Lock with handle RS 430, RS 430/U, RS 530, RS 530/U is compatible with cam: 15, 16, 19, 21, 35, 36, JK-10018, JK1-10018, JK2-10018, J-6000 (pg. 1C-12 do 1C-21)
H.G dimension to be chosen from pages 1C-9 to 1C-16