

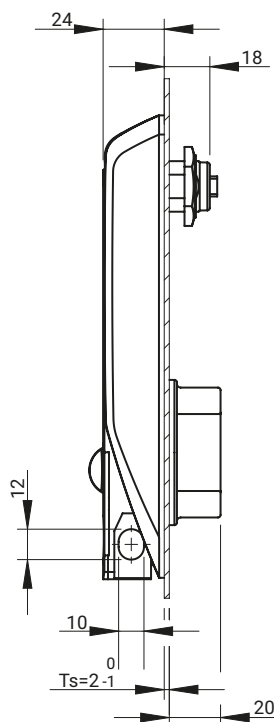
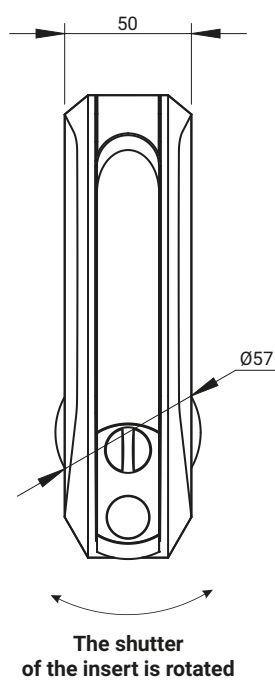
Functionality of the RS901 Lock

- New ergonomic design
- Works with one-point, two-point, three-point locking system
- The lock has an additional seal with PUR type seal and meets the IP65 standard
- Possibility to mount a Ø7 or Ø12 diameter padlock
- Possibility of locking with two padlocks and additionally with a half-profile cylinder lock or half-profile lock with shaped insert.
- Made of durable material Polyamide PA6 GF30
- Compatible with PANIK / ZWP.001, ZWP.002 and ZW locks

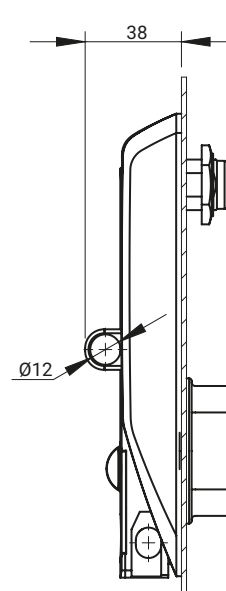
Version A



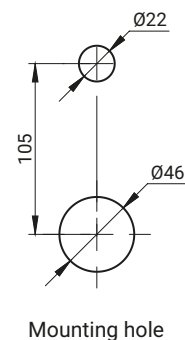
Additional Padlock eye



Version A
(without shackle)



Version B
(with shackle)



Mounting hole

Version B

The lock meets the IP65 standard for the A version only.

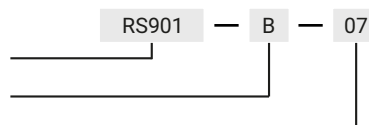
TYPE OF LOCK	VERSION	COMPONENTS	MATERIAL	FINISH [C]	
RS901	A	Housing, handle	Polyamide PA6 Gf30	RAL 9005	RAL 7035
	B			07	08

How to order:

Type of lock

Version

Finish [C]



where:

Ts - door thickness

The lock is fitted with cams from the group: 15, 16, 19, 21, 35, 36, JK1-10018-G-M, JK2-10018-G-M (page 1C-12 to 1C-21)

The lock works with inserts: WRS-X, WRS-B.001, WRS-P.001, WRS-D13.001, WRS-D13.002 (page 1C-1 to 1C-2)