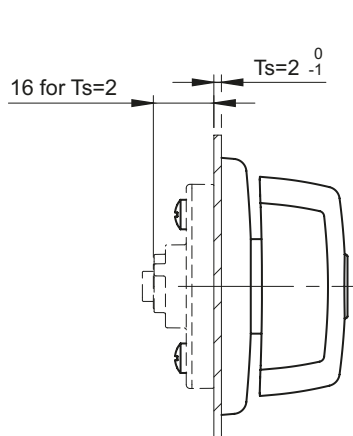
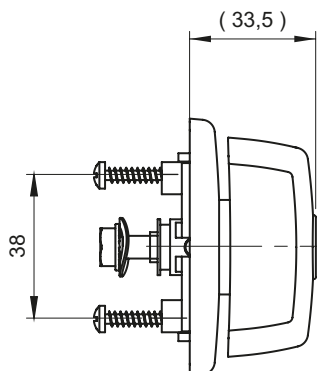
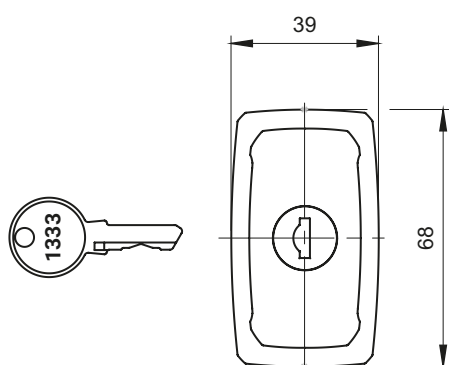


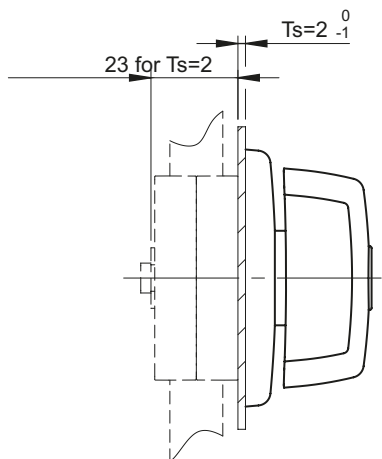


IP65

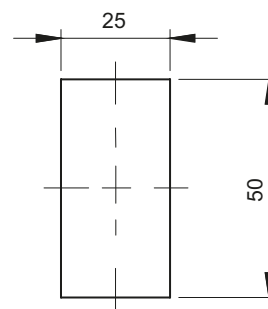
NEW



RW210.N
(Used with Cap)



RW210.M
(Used with Cogwheel mechanism)



Mounting hole

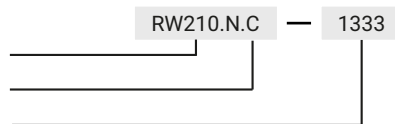
TYPE OF LOCK	COMPONENTS	MATERIAL	FINISH [C]	CYLINDER PROFILE		
			RAL 9005	KEY CODE	NO CYLINDER	
RW210.N RW210.M	Housing	Polyamide Pa6 Gf30	07	1333	RK (different code)	BW

How to order:

Type of lock

Finish [C]

Key code



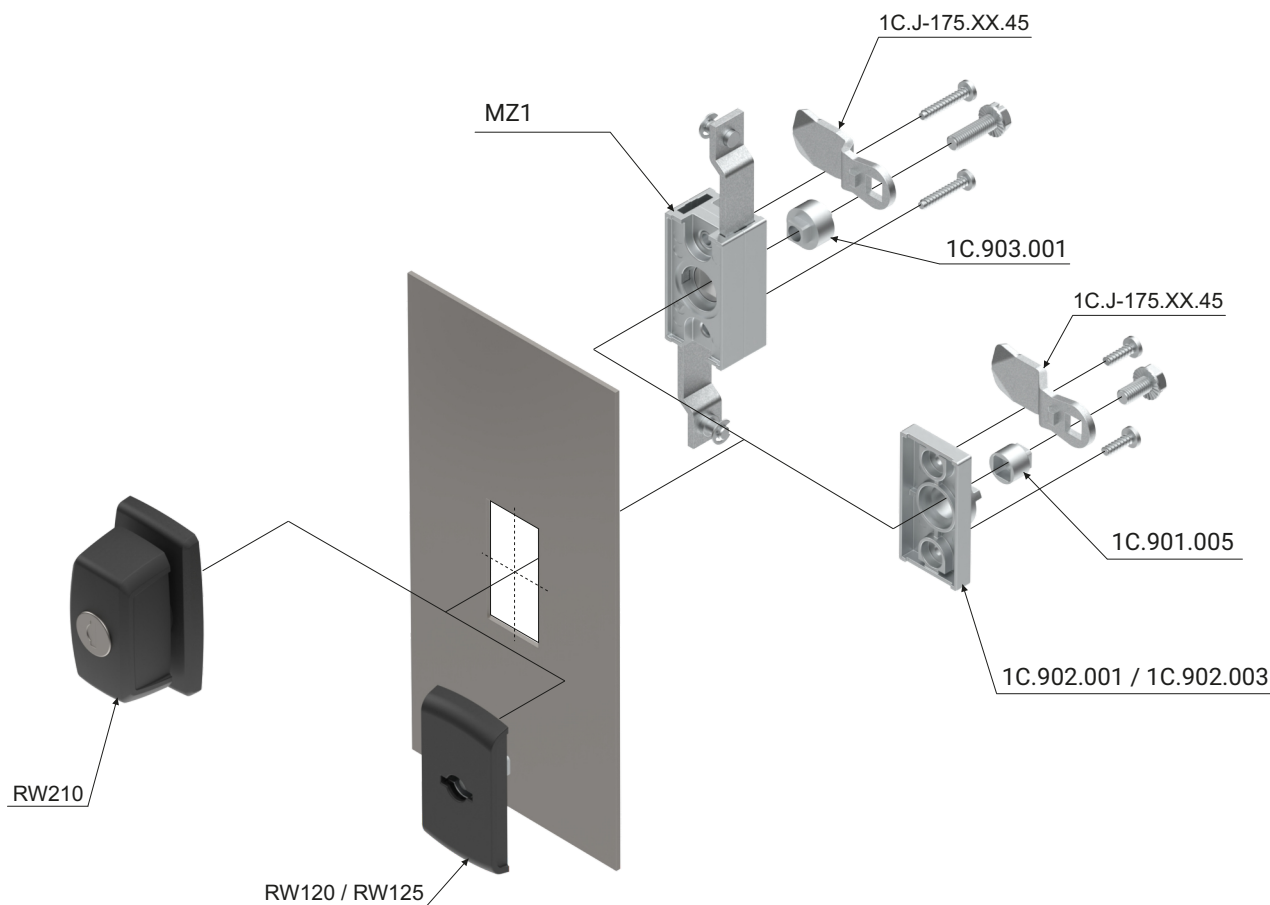
where:

Ts - door thickness

NOTE:

Elements ordered separately for the version for the cover plate and the gear mechanism are included in the tables, see page 1B-50.

Lock version for overlay or gear mechanism



ACCESSORIES ORDERED SEPARATELY UNDER THE COVER

TYPE OF LOCK	PRODUCT	CATALOGUE NUMBER
RW120.N RW125.N RW210.N	Cap 1C.902.001 / 1C.902.003	1C-27
	1-point cam, groups: 11, 13	1C-10 - 1C-11
	2-point cam, groups: 21	1C-15
	Sleeve	1C-27
	Rods	1C-4- 1C-5
	Rod guides	1C-6, 7

ACCESSORIES ORDERED SEPARATELY FOR THE RACK MECHANISM

TYPE OF LOCK	PRODUCT	CATALOGUE NUMBER
RW120.M RW125.M RW210.M	Cogwheel mechanism MZ1	1C-28 - 1C-29
	1-point cam, groups: 11, 13	1C-10 - 1C-11
	Adapter	1C-27
	Flat bar	1C-34 - 1C-40
	Flat bar guides and supports	1C-6, 8, 1C-34 - 1C-40