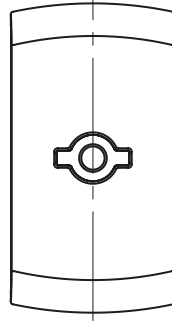
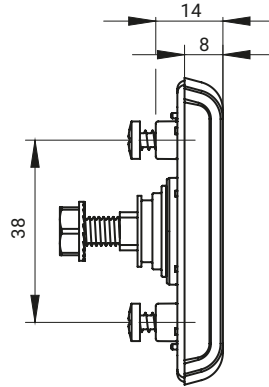


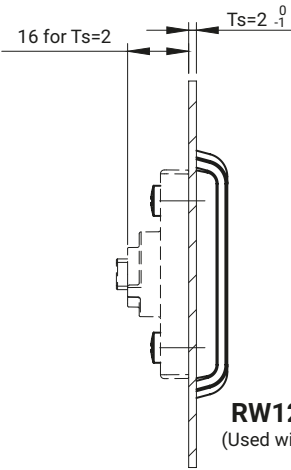
RW120



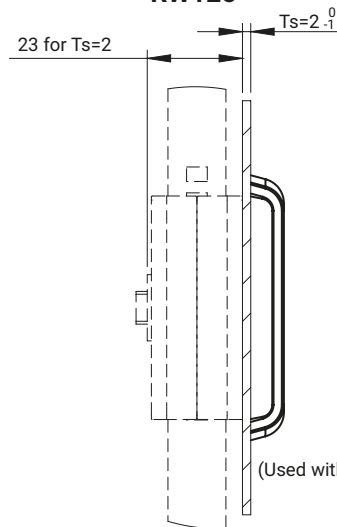
RW125



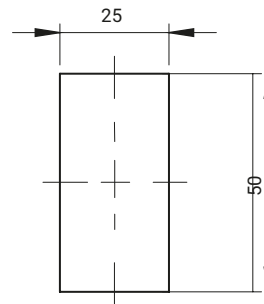
RW120



RW120.N
(Used with Cap)



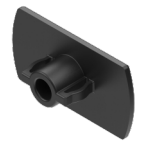
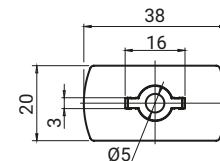
RW120.M
(Used with Cogwheel mechanism)



Mounting hole



RW125

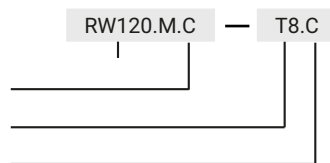


1C.912.002

PIN TYPE [X]			FINISH [C]		
RW120		RW125	Chrome	Nickel	RAL9005
KW8	T8	D5	01	02	04
TYPE OF LOCK	COMPONENTS	MATERIAL	FINISH [C]		
			RAL 9005		
RW120.N RW120.M RW125.N RW125.M	Body	Polyamide Pa6 GF30	07		
1C.912.002	Protective cover*	Polyamide	07		

How to order:

- Type of lock
- Finish [C]
- Type of insert
- Pin finish [C]



where:
Ts - door thickness

NOTE:

*Protective cover compatible with locks RW125.
Elements ordered separately for the cover plate version and the gear mechanism are included in the tables, see page 1B-51.