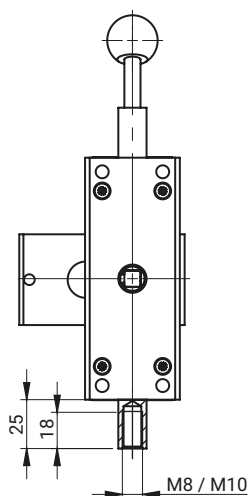
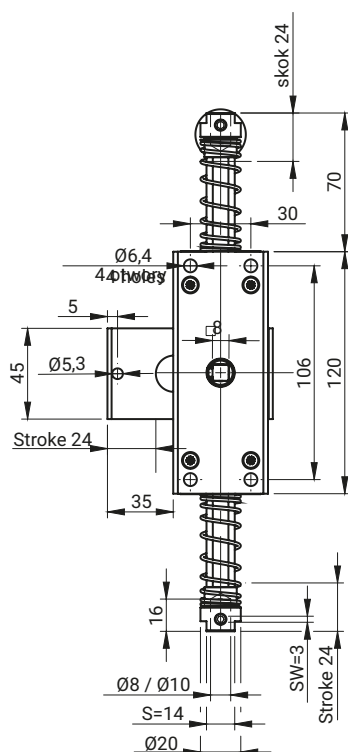


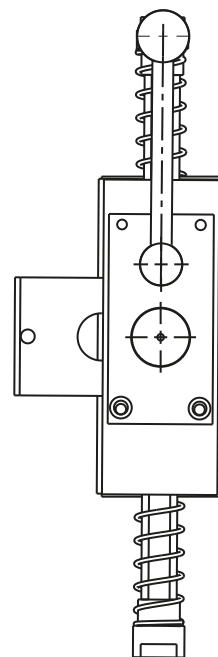
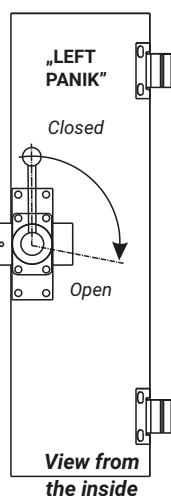
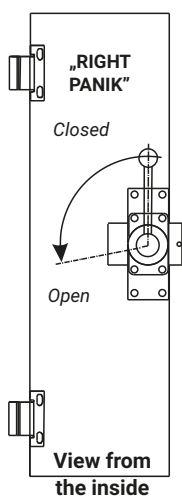
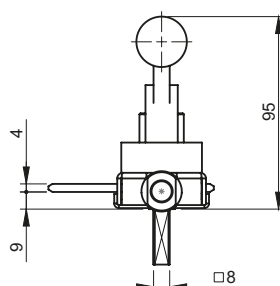
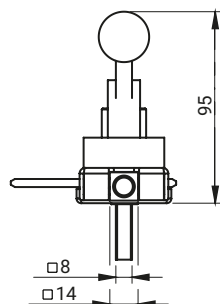
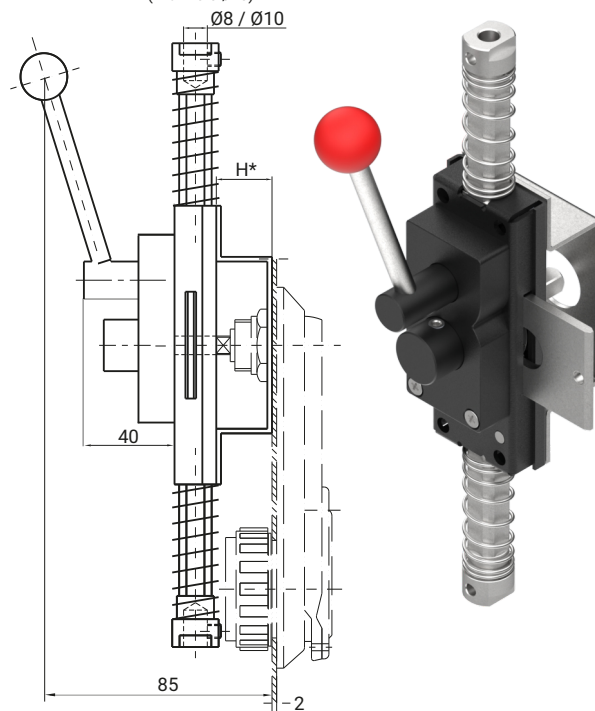
ZWPM8.002 (with thread M8)
ZWPM10.002 (with thread M10)



ZWP8.002 (with hole Ø8)



ZWP10.002 (with hole Ø10)



NOTE:

1. When ordering lock ZWP, you must define H dimension and version: left or right

NAME	MATERIAL
Internal lock panik ZWPM8.002	Steel zinc plated
Internal lock panik ZWPM10.002	
Internal lock panik ZWP8.002	
Internal lock panik ZWP10.002	
• When ordering you must define H dimension	