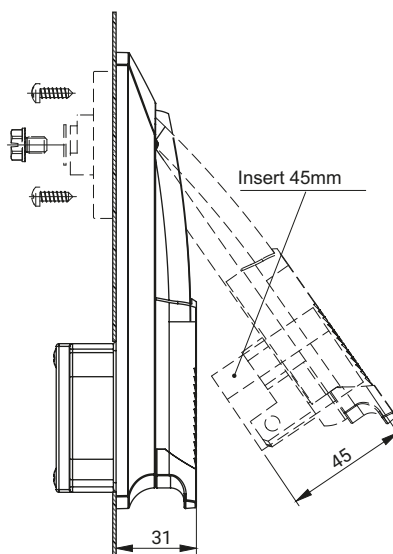
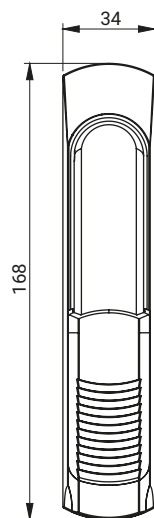
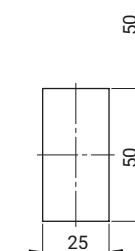
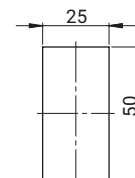
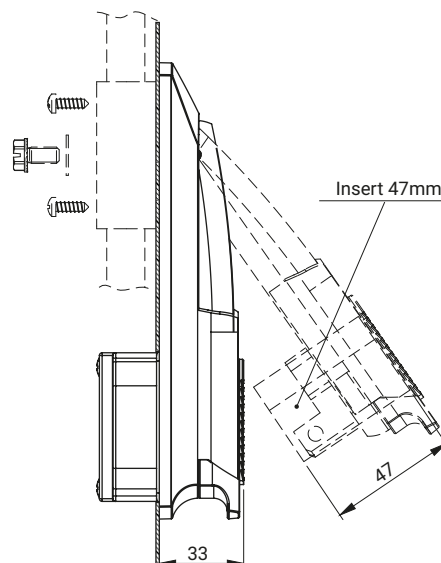
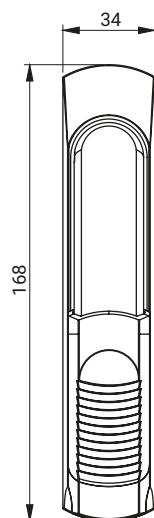


**RS730-45**

Mounting hole

**RS730-47**

TYPE OF LOCK	VERSION	COMPONENTS	MATERIAL	FINISH [C]	
				RAL 9005	RAL 7035
RS730-45.N	For the cap 1C.902.001	Housing, Handle	Polyamide PA GF30	07	08
RS730-47.N					
RS730-45.M	For the rod control				
RS730-47.M					

How to order:

Type of lock

Finish

RS730-45.N — [C]

The lock is fitted with profile which should be ordered separately (pg. 1C-1, 1C-2)

The lock is fitted with gear mechanism (pg. 1C-31 to 1C-34)

or the cover plate 1C.902.001 (pg.1C-28), should be ordered separately.