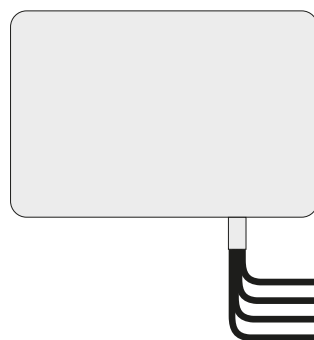
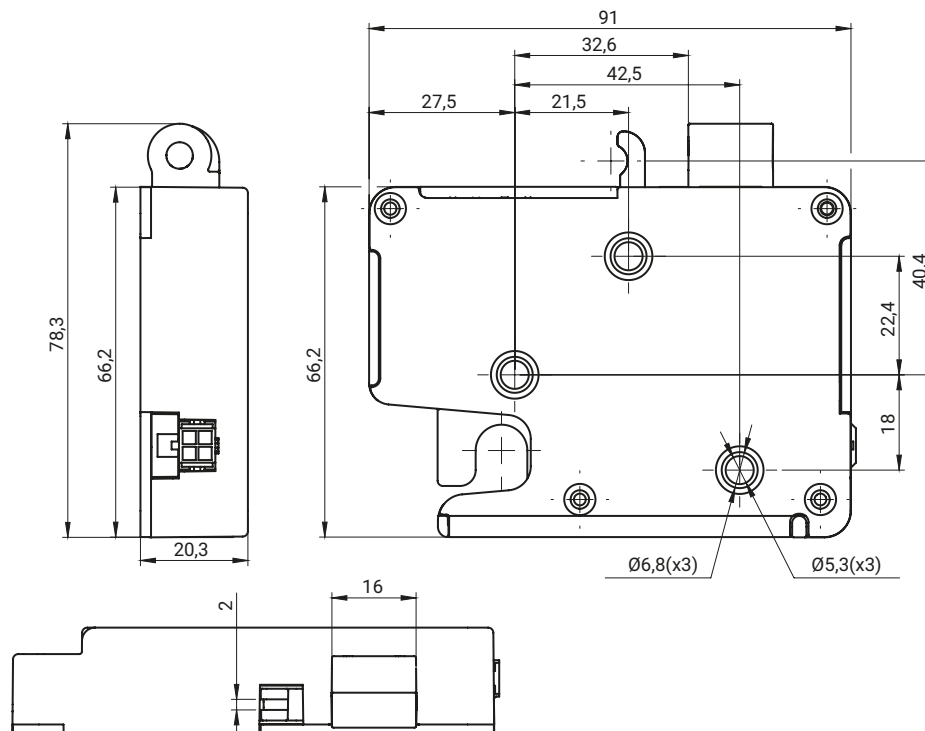


Electronic lock with rotary mechanism

2.ZME2



Connection diagram

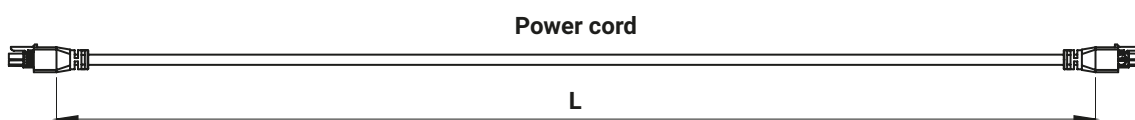
- PIN 1 Power
- PIN 2 Ground
- PIN 3 Door Status
- PIN 4 Lockout Status

1. Compact snap-on housing for universal mounting
2. Emergency opening
3. Rotary mechanism - electronic opening.
4. Easy to close by pushing the door

Technical details

- 8-24V DC power supply
- Working temperature -20°C ~ +65°C
- CE, ROHS & REACH
- Work cycles: <500,000 times

TYPE OF LOCK	LATCH VERSION	MATERIAL
2.ZME2.001	WA1	Stainless steel 304 ABS PC



LENGTH OF POWER CORD [X]				
L	250±5	650±10	1000±15	1500±15
X	1	2	3	4

How to order:

Type of lock

Length of power cord [X]

