

VIII. **ACCESSORIES**

FA-ACCESSORIES offer protection, additional functions, safety and a variety of mounting options for our products.

DE

ZUBEHÖR

FA-ACCESSORIES bieten Schutz, zusätzliche Funktionen, Sicherheit sowie eine Vielzahl von Befestigungsmöglichkeiten für unsere Produkte.

PL

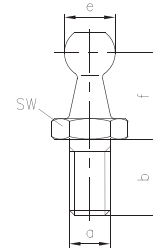
AKCESORIA

FA-AKCESORIA zapewniają ochronę, bezpieczeństwo, dodatkowe funkcje, a także umożliwiają wiele opcji montażu naszych produktów.

FA-ACCESSORIES

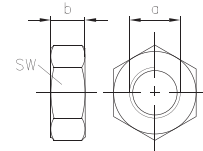
BALL STUD / KUGELZAPFEN / SWORZEŃ KULOWY

 ORDER NO.	DIMENSIONS REGARDING SKETCH							MATERIAL
	a	b	c	d	e	f	sw	
0025024	M6	13	-	-	10	12	13	SZ
0025037	M8	12	-	-	10	12	13	SZ
0025114	M8	13	-	-	10	17	13	SZ
0025117	M8	15	-	-	10	17	13	SZ
0025163	M8	18	-	-	10	17	13	SZ
0025247	M8	14	-	-	10	25	13	SZ
0025646	M8	16	-	-	13	13	11	SZ
0025647	M10	20	-	-	13	16	17	SZ



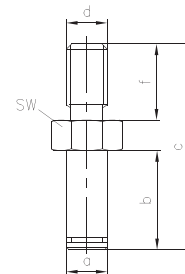
NUT / MUTTER / NAKRĘTKA

 ORDER NO.	DIMENSIONS REGARDING SKETCH							MATERIAL
	a	b	c	d	e	f	sw	
0048031	M6	5	-	-	-	-	10	SZ
0048032	M8	6,5	-	-	-	-	13	SZ
0048033	M10	8	-	-	-	-	17	SZ
0048034	M10x1	5	-	-	-	-	17	SZ



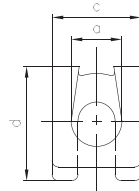
CLEVIS PIN / LAGERBOLZEN / SWORZEŃ

 ORDER NO.	DIMENSIONS REGARDING SKETCH							MATERIAL
	a	b	c	d	e	f	sw	
0025648	8	19	39	M8	-	12	14	SZ



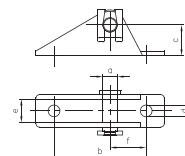
SL RETAINER / SL SICHERUNGSClip / MOCOWANIE ZABEZPIEZAJĄCE

 ORDER NO.	DIMENSIONS REGARDING SKETCH							MATERIAL
	a	b	c	d	e	f	sw	
0025649	8	-	14	18	-	-	-	SZ



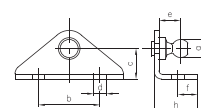
BEARING HINGE / LAGERSCHUH / ZAWIAS ŁOŻYSKOWY

 ORDER NO.	DIMENSIONS REGARDING SKETCH							MATERIAL
	a	b	c	d	e	f	sw	
0025650	8	51	17	6,5	13	20	-	SZ
0025651	8	85	23	6,5	13	22,5	-	SZ



ANGLE BRACKET / WINKELBESCHLAG / UCHWYT KĄTOWY

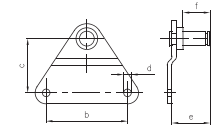
 ORDER NO.	DIMENSIONS REGARDING SKETCH							MATERIAL
	a	b	c	d	e	f	h	
0025652	10	38	19	5,1	12,5	8	20	SZ



FA-ACCESSORIES

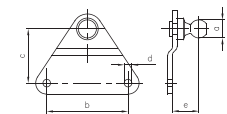
BRACKET / BESCHLAG / UCHWYT

ORDER NO.	DIMENSIONS REGARDING SKETCH							MATERIAL
	a	b	c	d	e	f	sw	
0025653	8	55	30	4,2	16	11	-	SZ



BRACKET / BESCHLAG / UCHWYT

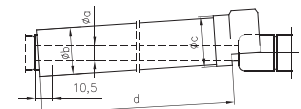
ORDER NO.	DIMENSIONS REGARDING SKETCH							MATERIAL
	a	b	c	d	e	f	sw	
0025654	10	55	30	4,2	17	-	-	SZ
0025655	13	55	30	4,2	17,5	-	-	SZ



LOCKING TUBE / ARRETIERROHR / TUBA BLOKUJĄCA

FOR GAS SPRINGS 8/19 / FÜR GASDRUCKFEDER 8/19 / DLA SPRĘŻYN GAZOWYCH 8/19 (10,5 MM STROKE REDUCTION / 10,5 MM HUBREDUZIERUNG / 10,5 MM - REDUKCJA SKOKU)

ORDER NO.	STROKE s	DIMENSIONS REGARDING SKETCH				MATERIAL
		a	b	c	d	
0026565	100	8	25	28	98	SZ+painted
0026566	125	8	25	28	123	SZ+painted
0026567	140	8	25	28	138	SZ+painted
0026568	160	8	25	28	158	SZ+painted
0026569	175	8	25	28	173	SZ+painted
0026570	200	8	25	28	198	SZ+painted
0026571	220	8	25	28	218	SZ+painted
0026572	250	8	25	28	248	SZ+painted
0026573	275	8	25	28	273	SZ+painted
0026574	300	8	25	28	298	SZ+painted
0026575	350	8	25	28	348	SZ+painted



LOCKING STRUT / ARRETIERSTÜTZE / SZYNA BLOKUJĄCA

FOR GAS SPRINGS 10/22 AND 14/28 / FÜR GASDRUCKFEDER 10/22 UND 14/28 / DLA SPRĘŻYN GAZOWYCH 10/22 I 14/28

ORDER NO.	STROKE s	DIMENSIONS REGARDING SKETCH				MATERIAL
		a	b	c	d	
0025656	100	8,5	15	18,5	115	SZ
0025657	125	8,5	15	18,5	140	SZ
0025658	150	8,5	15	18,5	165	SZ
0025659	175	8,5	15	18,5	190	SZ
0025660	200	8,5	15	18,5	215	SZ
0025661	250	8,5	15	18,5	265	SZ
0025662	300	8,5	15	18,5	315	SZ
0025663	350	8,5	15	18,5	365	SZ
0025664	400	8,5	15	18,5	415	SZ
0025665	450	8,5	15	18,5	465	SZ
0025666	500	8,5	15	18,5	515	SZ

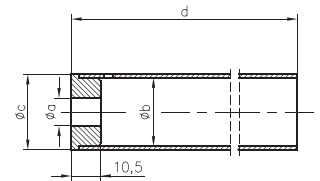


FA-ACCESSORIES

PROTECTION TUBE / SCHUTZROHR / TUBA OCHRONNA

FOR GAS SPRINGS 10/22 / FÜR GASDRUCKFEDER 10/22 / DLA SPRĘŻYN GAZOWYCH 10/22 (10,5 MM STROKE REDUCTION / 10,5 MM HUBREDUZIERUNG / 10,5 MM - REDUKCJA SKOKU)

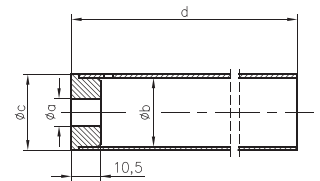
ORDER NO.	S STROKE	DIMENSIONS REGARDING SKETCH				MATERIAL
		a	b	c	d	
0025667	100	9,5	23,5	26	125	P
0025668	125	9,5	23,5	26	150	P
0025669	150	9,5	23,5	26	175	P
0025670	160	9,5	23,5	26	185	P
0025671	175	9,5	23,5	26	200	P
0025672	200	9,5	23,5	26	225	P
0025673	250	9,5	23,5	26	275	P
0025674	300	9,5	23,5	26	325	P
0025675	350	9,5	23,5	26	375	P
0025676	390	9,5	23,5	26	415	P
0025677	450	9,5	23,5	26	475	P



PROTECTION TUBE / SCHUTZROHR / TUBA OCHRONNA

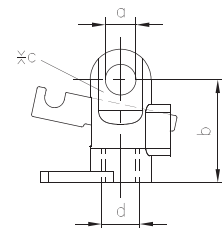
FOR GAS SPRINGS 14/28 / FÜR GASDRUCKFEDER 14/28 / DLA SPRĘŻYN GAZOWYCH 14/28 (10,5 MM STROKE REDUCTION / 10,5 MM HUBREDUZIERUNG / 10,5 MM - REDUKCJA SKOKU)

ORDER NO.	S STROKE	DIMENSIONS REGARDING SKETCH				MATERIAL
		a	b	c	d	
0025678	100	12,5	29	32	130	P
0025679	150	12,5	29	32	180	P
0025680	200	12,5	29	32	230	P
0025681	250	12,5	29	32	280	P
0025682	275	12,5	29	32	305	P
0025683	300	12,5	29	32	330	P
0025684	325	12,5	29	32	355	P
0025685	350	12,5	29	32	380	P
0025686	375	12,5	29	32	405	P
0025687	395	12,5	29	32	425	P
0025688	450	12,5	29	32	480	P
0025689	500	12,5	29	32	530	P



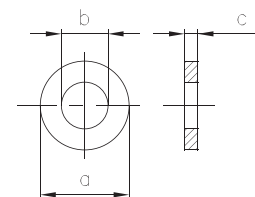
RELEASE HEAD / AUSLÖSEKOPF / GŁOWICA ZWALNIAJĄCA

ORDER NO.	DIMENSIONS REGARDING SKETCH							MATERIAL
	a	b	c	d	e	f	sw	
0048029	8,1	30	11	M10x1	-	-	-	Z



RUBBER BUMPER AND WASHER / GUMMIPUFFER UND SCHEIBE / ZDERZAK GUMOWY / PODKŁADKA

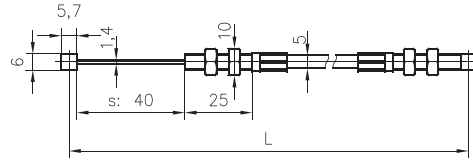
ORDER NO.	DIMENSIONS REGARDING SKETCH							MATERIAL
	a	b	c	d	e	f	sw	
0048035	21	10,5	2	-	-	-	-	P
0048036	20	10,5	3	-	-	-	-	rubber/ Gummi



FA-ACCESSORIES

BOWDEN WIRE / BOWDENZUG / LINKA BOWDENA

ORDER NO.	S STROKE
0048028	500
0048027	650
0048030	1000
0048026	1200



ENG

√	material thickness
A	aluminum
SZ	steel zinc coated
SI	steel zinc iron coated
SX	stainless steel
P	plastic
Z	zinc die-cast zinc coated

DE

√	Materialdicke
A	Aluminium
SZ	Stahl verzinkt
SI	Stahl zinkeisenbeschichtet
SX	Edelstahl
P	Kunststoff
Z	Zinkdruckguss verzinkt

PL

√	grubość materiału
A	aluminium
SZ	stal (biały ocynk)
SI	stal (czarny ocynk)
SX	stal nierdzewna
P	plastik
Z	odlew cynkalowy (biały ocynk)