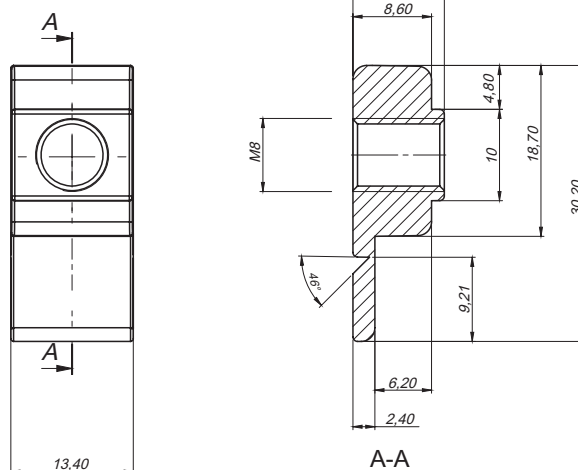


Use and installation

CAT. NUMBER	XY	FINISH	COMPONENTS	MATERIAL
4.500.001.XY	01	No	Connector	Zamak 5
	11	RAL 7035*		
4.500.001.02		-	Nut M6	Zamak 5
4.500.001.03		-	Screw M6x12 DIN 7380	Steel zinc plated

\* possibility to make a different color

Installation nut



CAT. NUMBER	MATERIAL
4.501.001	ZAMAK