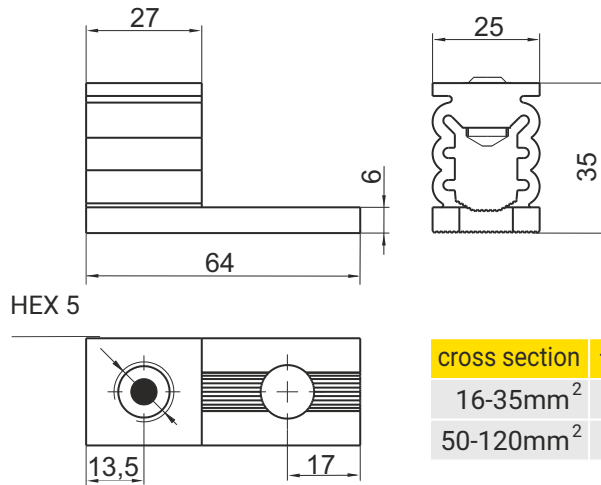
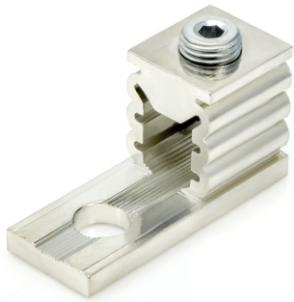
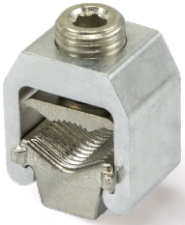
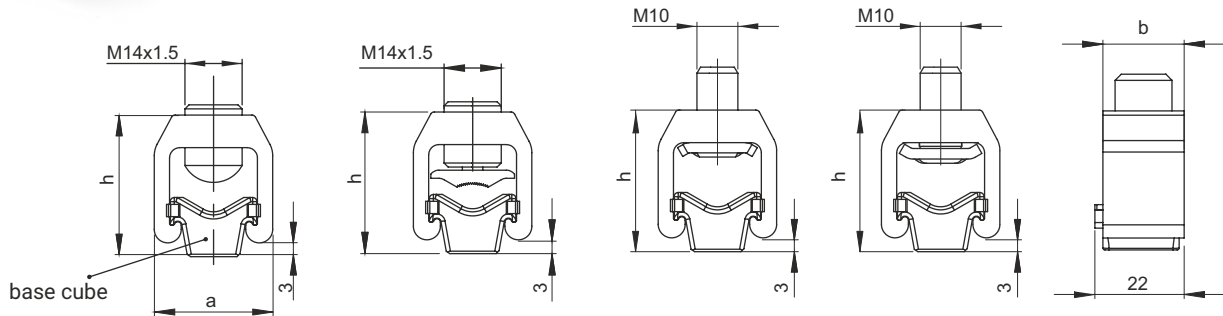






**16-120 SW**

cross section	tightening torque
16-35mm <sup>2</sup>	12 Nm
50-120mm <sup>2</sup>	25 Nm

For the multiwire sector shaped conductor **rm** the need to use the tip of the sleeve DIN 46228/4

**10-150.SW.A****10-150.SW.B****10-150.SW.C1****10-150.SW.C2**

-  **sm** - multiwire sector shaped conductor (flexible)  
  **rm** - round multiwire conductor (flexible)  
 **se** - sector shaped conductor (rigid)  
  **re** - round conductor (rigid)

DETAIL	CROSS-SECTION [mm <sup>2</sup> ]				NOMINAL CROSS-SECTION [mm <sup>2</sup> ]	MAX TIGHTENING TORQUE [Nm]	DIMENSIONS		
	sm	se	rm	re			a	b	h
<b>16-120SW</b>	-	-	16-120	16-120	120	12-25	25	27	35
<b>10-150.SW.A</b>	35-120	35-150	10-95	10-120	120	15	29	20	34
<b>10-150.SW.B</b>	35-70	35-95	10-50	10-70	95	15	29	20	34
<b>10-150.SW.C</b>	35-70	35-95	10-50	10-70	95	15	29	20	34

	16-120SW	10-150.SW.A	10-150.SW.B	10-150.SW.C1/C2
<b>clamp</b>	-	-	brass tin-plated	spring steel zinc-plated
<b>base cube</b>	-	Brass tin-plated		
<b>housing</b>	aluminium (AlMgSi)			
<b>screw</b>	brass tin-plated			steel zinc-plated

\* SW - hexagon head socked.

\* Screw clamps have safety sign 'B' WG PN-EN 60947-7-1, (IEC 60947-7-1)